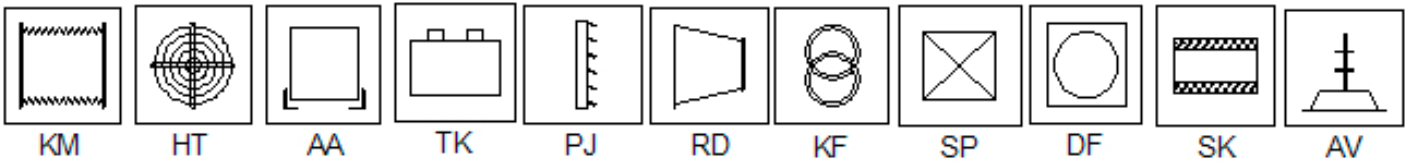
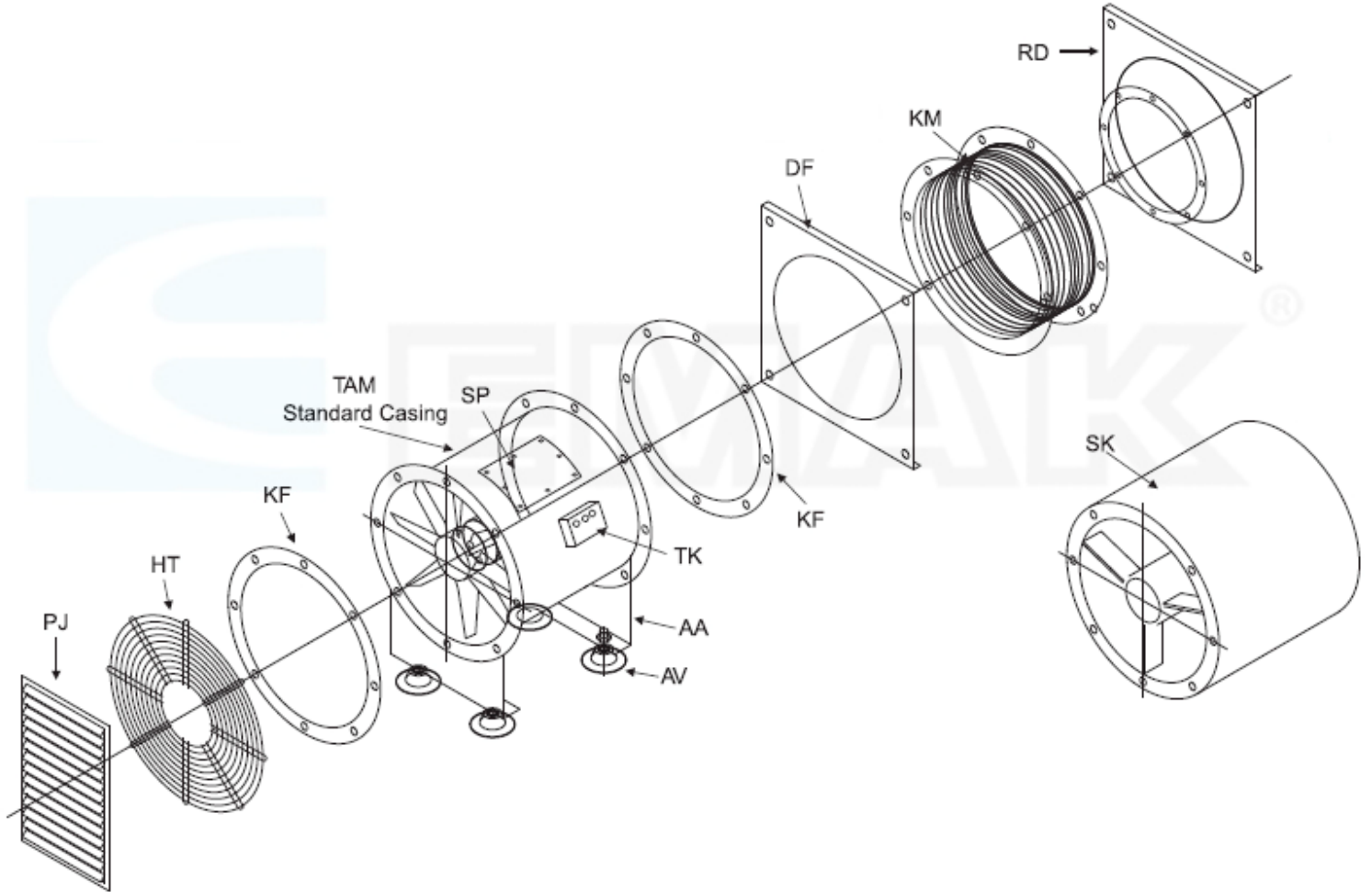




[www.emak.com.tr](http://www.emak.com.tr)

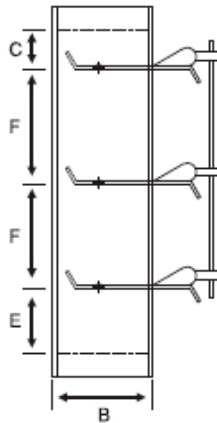
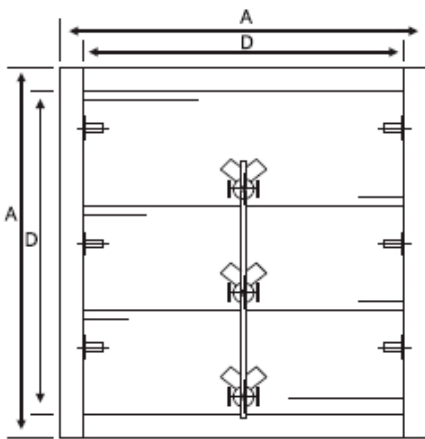
## GENERAL SPECIFICATIONS

- **DRIVE:** All fans are direct driven by the Electric Motor (unless otherwise agreed) optional, belt driven models available on request.
- **GUIDE VANE SECTION (GV):** Adding the guide vane section on the discharge side provides higher pressure with the same horse power.
- **SILENCER (SK) :** Pre-galvanised construction, packaged sound-absorbent acoustic media, ready to match the fan flange easily, available all sizes. Dimensions on request. Circular and rectangular shapes are manufactured.
- **LOUVERS (PJ) and DAMPERS (DP) :** EMAK Fan have a very large manufacturing programme of different kinds of Louvers-Dampers. Most of the products are aluminium with the pre-galvanised mild steel.
  - a) Fixed blade models
  - b) Airstream / Hand operated
  - c) Servomotor operated (On/Off-Thermostatic)
  - d) Fire dampers – Butterfly type dampers
  - e) Heavy duty dampers
- **WIRE GUARDS (HT) :** Impeller side guards, heavy-gauge spiral wound wire is welded to ribs then painted or galvanised. Available for each size of fan.
- **MATCHING FLANGES (KF) :** Companion flanges are match to fit either discharge or inlet sides of casing. Available for each size, painted or galvanised.
- **SQUARE FLANGES (DF) :** For either standart or wall type casing, inlet / discharge or both sides. Available for each size, painted or galvanised.
- **FLEXIBLE CONNECTORS (KM) :** Available for each size, painted or galvanised.
- **CONES (RD) :** Inlet Bell, Diffuser, Extension parts or any special design connection section orders are welcome, available for each size, painted or galvanised.
- Other ancillary equipments:
  - a) Mounting feet (AA)
  - b) Anti-wibration mountings (AV)
  - c) Electric Starters / Speed Controllers / Overloading of phase protection (EA)
  - d) Outside fitted terminal box (TK)
  - e) Hot dip galvanized (GALV)
  - f) Access Door (SP)



## DAMPERS

**GDD - Backdraft Damper:** Blades are moved by face mounted linkage arms. Galvanize casing and aluminium blades are used in GDD serie. Small cross sectioned types can be operated with air pressure.



MODEL	Dimensions in mm							
	D	A	B	Blades Number	C	E	F	N
250	278	338	120	2	43	105	130	47
330	358	418	120	3	38	93	113.5	42
355	383	443	120	3	40	99	81.3	44
400	428	488	120	3	44	110	136.5	48
450	478	538	120	3	49	122	153.5	53
500	548	608	120	4	43	107	132.3	47
560	608	668	120	4	48	117	147.3	52
630	678	738	120	5	43	106	132.3	47
670	718	778	120	5	45.5	111.5	141	49
710	760	820	120	6	41	100	124	45
800	850	910	120	6	46	112	138	50
900	952	1012	120	6	50	125	129.5	54
950	1002	1062	120	6	52.5	130.5	164	56
970	1022	1082	120	6	54	133	167	58
1000	1050	1112	120	6	55.5	134.5	172	59

**HDD - Heavy Duty Damper:** HDD Type Heavy Duty Dampers are designed and manufactured by EMAK's skillful design engineers. The material is all steel. Galvanization or epoxy coating is preferred after production. Electric - ElectroHydraulic - Pynomatic Actuators being used according to project specifications.



**GAD - Damper with Linkage Arms:** Galvanize casing and aluminium blades are used in GAD Serie. Blade opening mechanism is by linkage armed type - paralel blade opening.

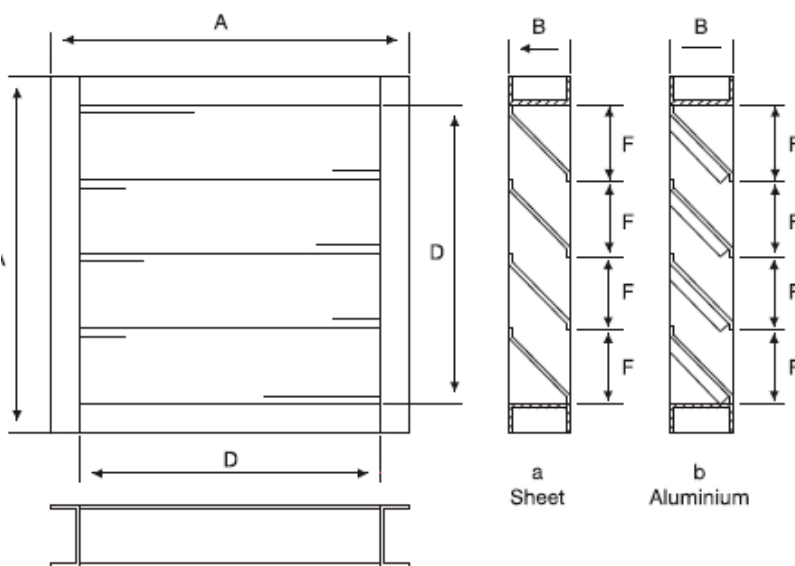


**DAD - Geared Damper:** All aluminium type with plastic gears. Mostly preferred for A / C applications with opposite side blade opening. All above damper production can be delivered with electro - pynomatic or electro - hydraulic actuators.



### FIXED BLADE LOUVER - PJ

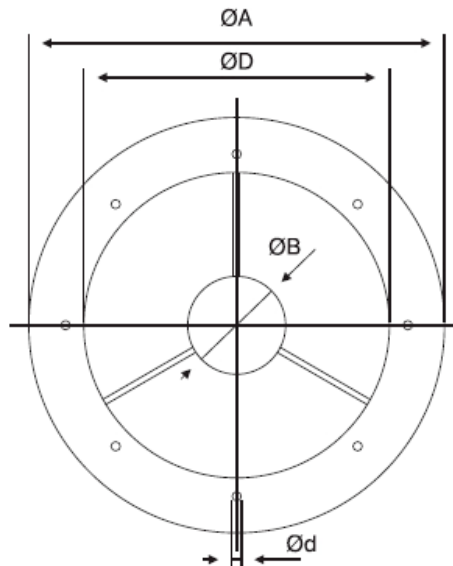
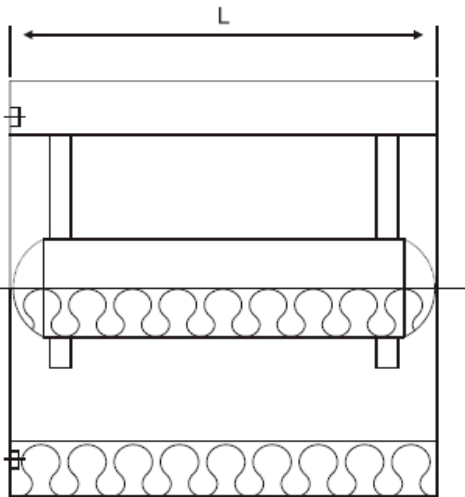
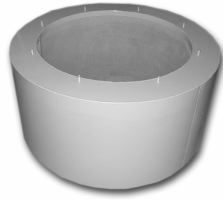
Louvers are used for preventing strange materials to go into the fan, and when the aesthetic is important in the place. Frame profiles are aluminium or sheet such as blades



MODEL	Dimensions in mm				
	D	A	B	F	Blade Number
250	278	338	80	92.7	3
330	358	418	80	119.3	3
355	383	443	80	127.7	3
400	428	488	80	107	4
450	478	538	80	119.5	4
500	548	608	80	109.6	5
560	608	668	80	121.6	5
630	678	738	80	113	6
670	718	778	80	119.7	6
710	760	820	80	108.6	7
800	850	910	80	121.4	7
900	952	1012	80	119	8
950	1002	1062	80	111.3	9
970	1022	1082	80	114	9
1000	1050	1112	80	116.7	9

## SILENCER - SK

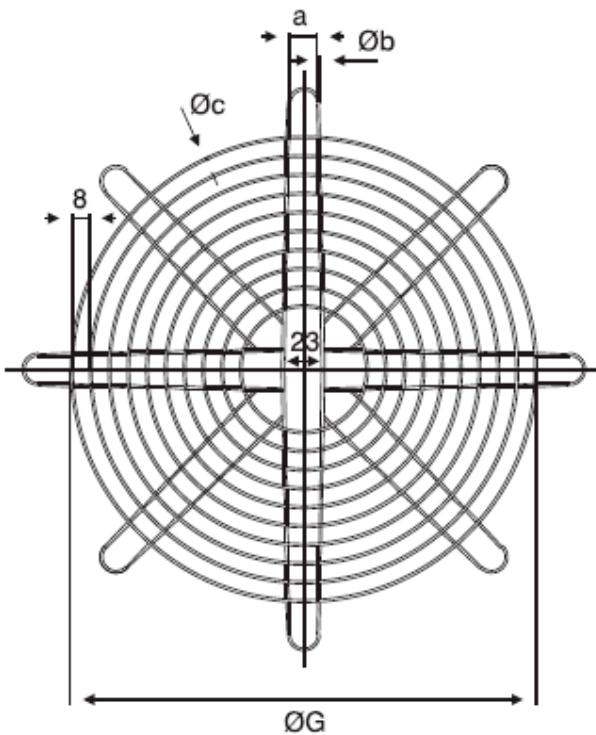
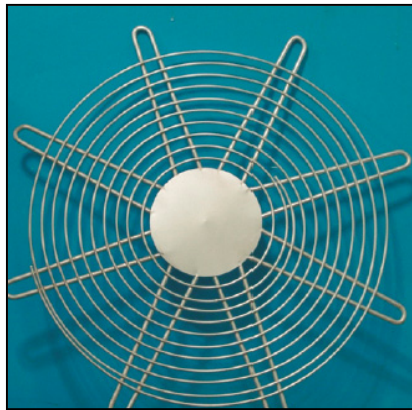
Pre-galvanised construction, packaged sound-absorbent acoustic media, ready to match the fan flange easily, available all sizes. Dimensions on request. Glass wool, stone wool climatic type plate and styrofor are the alternatives of sound absorber



Dimensions in mm				
ØD	ØA	ØB	L	Ød x Pcs
400	610	120	610	M10 x 8
450	660	120	660	M10 x 8
500	710	120	710	M10 x 8
560	795	200	800	M12 x 8
630	865	200	860	M12 x 8
670	905	200	900	M12 x 8
710	1025	250	1000	M12 x 8
800	1115	250	1110	M14 x 8
900	1215	250	1200	M14 x 8
970	1295	250	1250	M14 x 8

## WIRE GUARD - HT

Impeller side guards, heavy-gauge spiral wound wire is welded to ribs then painted or galvanised. Available for each size of fan.



Dimensions in mm

MODEL	A	ØG	a	Øb	Øc
250	320	235	12	5	3
330	400	315	12	5	3
355	425	340	12	5	3
400	470	385	12	5	3
450	520	435	12	5	3
500	565	485	12	5	3
560	625	545	14	5	3
630	695	615	14	5	3
670	735	655	14	5	3
710	778	695	16	5	3
800	868	785	16	5	3
900	988	885	16	5	3.5
950	1038	935	16	5	3.5
970	1058	955	16	5	3.5
1000	1091	985	16	6	3.5

**MATCHING FLANGE / SQUARE FLANGE KF / DF**

Companion flanges are match to fit either discharge or inlet sides of casing. Available for each size, painted or galvanized

**GUIDE VANE- GV**

Adding the guide vane section on the discharge side provides higher pressure with the same horse power.

**DRIVE**

All fans are direct driven by the electric motor (unless otherwise agreed) optional, belt driven models available on request.